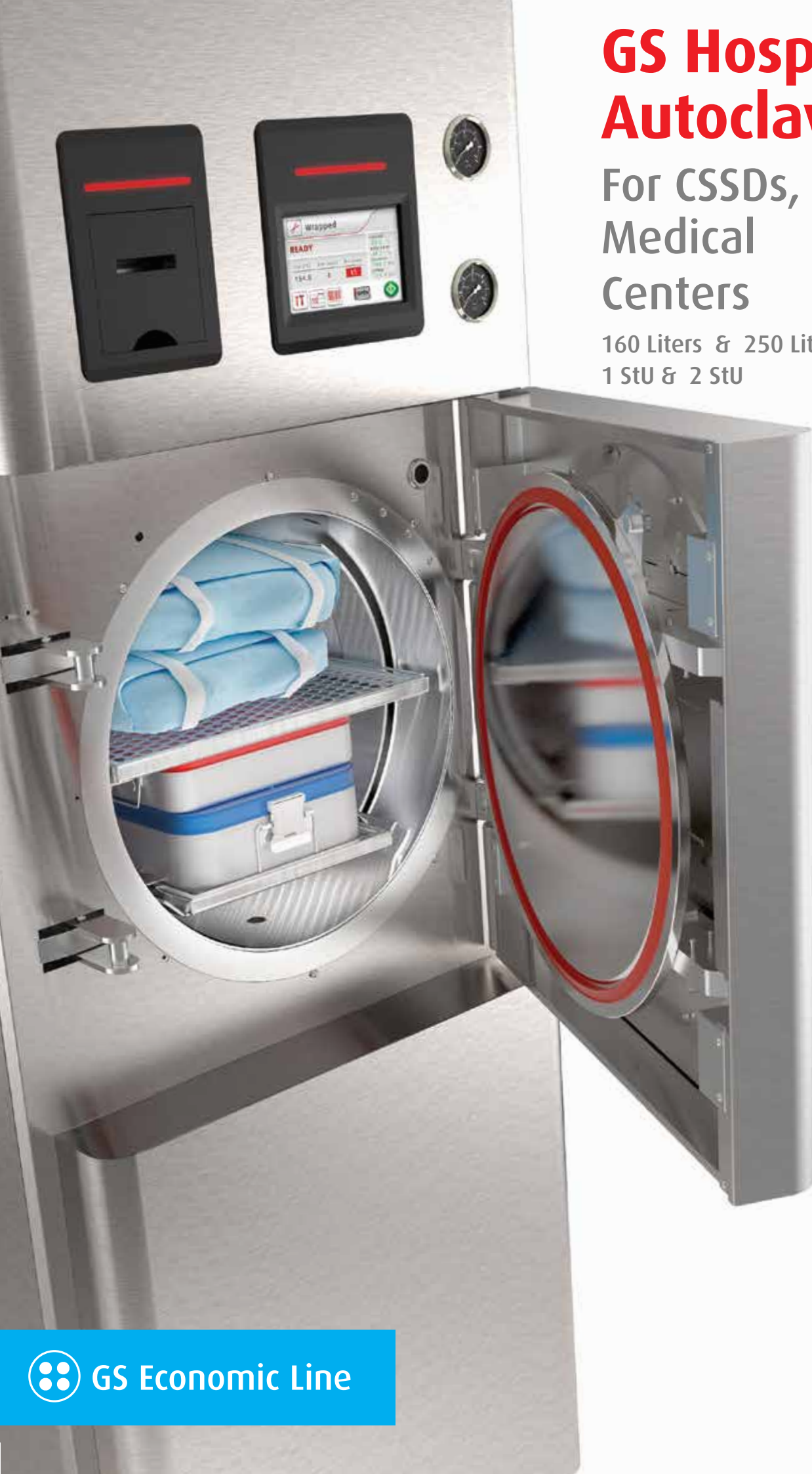


# GS Hospital Autoclaves

For CSSDs, OR & Medical Centers

160 Liters & 250 Liters  
1 StU & 2 StU



GS Economic Line



## Hospital Autoclaves

GS hospital autoclaves are designed for Hospital CSSD, OR, and Medical Centers with limited budgets that need reliable sterile processing. GS autoclave sterilizers are designed and manufactured in a state-of-the-art facility in compliance with strict international standards to ensure safe re-use of sterilized equipment.

**GS Autoclaves are available with Single or Double doors.**

The GS autoclave line includes 160 liter (1 StU) and 250 liter (2 StU) autoclaves providing hospital grade sterilization and a medium loading capacity at a cost-effective price that meets the highest international standards.

### **Experience since 1925**

For over 90 years Tuttnauer, as a family owned business, has been an industry leader satisfying customer expectations with top quality, high performance products and a dedicated service support team. Tuttnauer sterilization & infection control products are trusted at over 350,000 installations worldwide including Hospitals, Clinics, Laboratories and Pharmaceutical Facilities.

## Narrow Design

### Designed for Limited Space

- Narrow 75cm wide autoclaves for more autoclaves in a limited area
- More autoclaves reduce downtime risks by ensuring continued sterile processing

## More Affordable

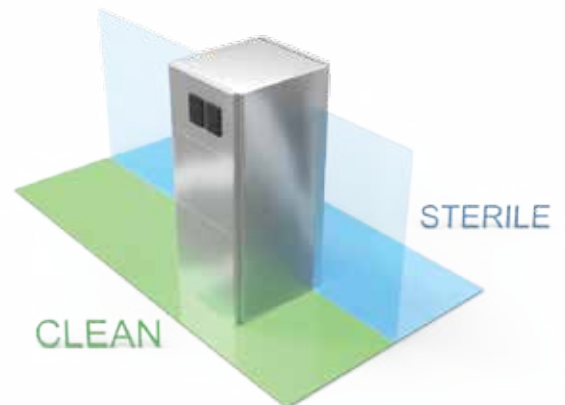
### For Facilities with Limited Budget

- Rounded chamber and coiled jacket reduces the manufacturing cost of the autoclave
- Tuttnauer passes that benefit on to our customers

## Simplified Design = Low Maintenance

### Hospital Grade Performance with Simplified Design

- Less parts and reduced complexity
- Light weight and simplified installation with flexible connections
- Low long-term maintenance costs



### Convenient 1 Wall Pass-Through Installation

- Wall Installation between non-sterile and sterile rooms
- Includes side panels for 1-wall installation
- Additional service area not required
- Can also be installed in a 2 wall separation

# Advanced Control System for Your CSSD

Take advantage of Tuttnauer's sophisticated user-friendly control systems with Multi-Color Touch Display

## Features

- Stores the last 200 cycles in built-in memory
- Sterilization Temperature range 105°C to 138°C
- Ethernet connection port for PC and network access
- Multiple access levels and user passwords to control access/operation of the autoclave
- PID (Proportional Integral Differential) pressure control
- Diagnostic In/Out test (enables technician to check each system component separately)
- Independent Recording for cross-checking temperature and pressure measurements (optional)

## Load Tracing with Barcodes

When loading the autoclave, a barcode reader can be used to scan the barcodes of each load. Once the cycle starts, the barcode numbers will be printed together with cycle information.

## Process Workflow Management Data Connection

Provides real-time data to any process workflow management system supporting Modbus.

## Sterilization Cycle Programs

GS autoclaves include 5 fixed sterilization programs, 2 test programs and 22 customizable sterilization programs.

Program	Load Type	Temp. (°C)	Sterilization Time (min)	Dry Time (min)	Total Time without drying (min) *	
					5075 GS	50125 GS
Unwrapped 134	Unwrapped instruments	134	4	1	24	21
Wrapped 134	Wrapped instruments	134	7	20	37	32
Unwrapped 121	Unwrapped delicate instruments	121	20	1	36	34
Wrapped 121	Wrapped delicate instruments	121	20	20	50	41
Prion 134	Prion	134	18	20	50	47
Leak Test	No load	-	-	-	31	20
Bowie & Dick Test	PCD	134	3.5	2	21	25

\* Cycle times are based on: 15kg load for 5075GS, 33 kg load for 50125GS, and do not include drying. Cycle times based on warm chamber and may change according to load size. Bowie & Dick Test is also suitable for Helix test device. Leak Test checks that the chamber under vacuum does not leak.



## Sophisticated Touch Screen HMI

- 7" Multi-color touch screen panel on both sides
- Multi-color display for easier reading from a distance
- Multilingual (26 languages)
- Graphical display of Temperature and Pressure trend graphs



Bacsoft Controller



STANDARD

OPTIONAL



Built-in Printer



Touch Screen  
Both sides



Remote Internet access  
for Technical Support  
(requires R.PC.R, and local  
cellular router for  
Internet connection)



Barcode  
Reader



Independent  
Recorder for  
Temperature and  
Pressure



R.PC.R software  
for access from  
any PC on internal  
network



Paperless Chart  
Recorder

Load Tracing & Automatic Recording of Cycle Information to Your PC

R.PC.R Software (optional)

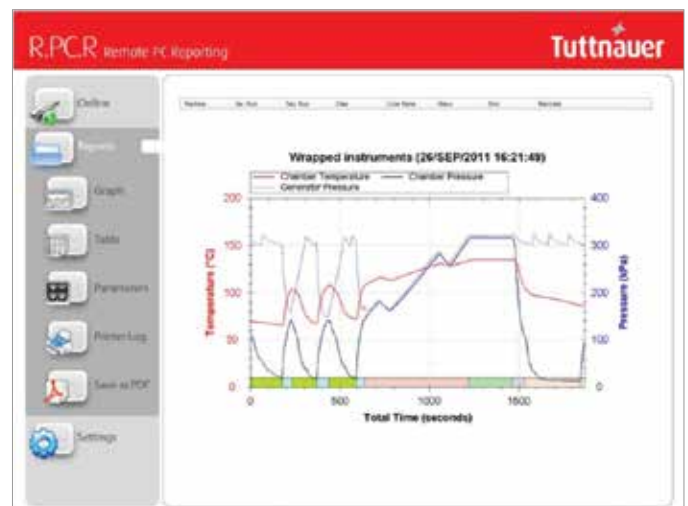
Cycle Records You Can Rely On

- Automatic recording of cycle information to any PC on your network via Ethernet
- Convenient access to graphs and tables that are easy to understand
- Easily generate PDF reports
- No need to file printouts, saving you time

Load Traceability

Conveniently trace loads from a PC on your network with R.PC.R software. When barcodes of loads are scanned before a cycle starts, the barcode information is reported together with the cycle records.

**With R.PC.R you can see:** Graphs of the cycle data, Numeric cycle data, Cycle print-outs, Measured values table, Parameter table.



**GS Autoclaves are hospital grade autoclaves, suitable for large clinics and medical centers, and are designed to operate 24 hours a day. They can be installed between clean and non-clean zones when using double door configuration.**

**Features**

- Automatic locking hinged door(s)
- 7" Touch screen on both sides
- 18kW built-in steam generator
- Built-in wheels
- Built-in water-ring vacuum pump
- 316L Stainless steel chamber
- 304L Stainless steel housing
- Built-in printer

## 5075GS Autoclave

- 160 Liter Chamber
- 1 StU basket
- 2 ISO basket

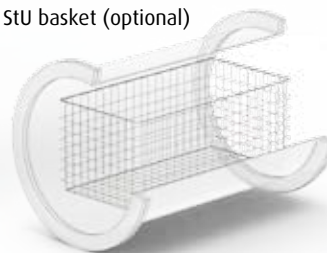


5075GS Dimensions



Standard configuration includes 2 trays

1 StU basket (optional)



2 ISO baskets (optional)



# 50125GS Autoclave

- 250 Liter Chamber • 2 StU Baskets • 4 ISO Baskets

## 50125GS Dimensions



## Technical Specifications

Model	Chamber Dim. Ø x L (mm)	Chamber Vol. (Liters)	Tray Dimensions W x H x D (mm)	Baskets	Power (kW)	Voltage/Freq. Volts/Hz
50125GS-1A (1 door)	500 x 1250	250	2 x [310 x 21 x 610]	2 StU	18kW	3 ph, 208/230/400 Volts 1ph, 230 Volts* 50/60 Hz
50125GS-2A (2 doors)			2 x [471 x 21 x 610]	4 ISO		
5075GS-1A (1 door)	500 x 810	160	310 x 21 x 773	1 StU	18kW	3 ph, 208/230/400 Volts 1ph, 230 Volts* 50/60 Hz
5075GS-2A (2 doors)			471 x 21 x 773	2 ISO		

\* requires switch box - optional

Note: The 50125GS requires a compressed air supply of 6 Bar to operate pneumatic valves.

## Standards

Tuttnauer pressure vessels are both ASME and PED certified. All ASME certified vessels are inspected by an independent authorized ASME inspector.

### Directives & Guidelines:

- EN285:2016 Large Steam Sterilizer
- 2012/19/EU WEEE and 2002/95/EC RoHS Directives
- 2014/30/EU, Electromagnetic compatibility
- 2014/35/EU Electrical Equipment Directive
- 2006/42/EC Machinery Directive
- 93/42/EEC for medical devices (amended in Directive 2007/47/EEC)
- EN 17665-1: 2006 Sterilization of health care products – moist heat
- ANSI / AAMI – ST 8: 2013 Hospital steam sterilizers (large sterilizers)

### Safety and EMC Standards

- IEC 61010-1: 2010 Safety requirements for measurement control and laboratory use
- IEC 61010-2-40: 2005 Safety requirements for sterilizers used to treat medical materials
- EN 61326-1: 2013 Electrical Equipment for EMC Requirements
- EN 60529:1991 Degrees of protection provided by enclosures (IPX4)

### Pressure Vessel and Steam Generator Construction Standards

- 2014/68/EU Pressure Equipment Directive
- ASME Code, Section VIII, Division 1, unfired pressure vessels
- ASME Code, Section I, for boilers

### Quality System Compliance

- ISO 9001:2008 - Quality Management Systems
- EN ISO 13485:2012 Quality Management Systems – Medical Devices

### Management System – Medical Devices

- In compliance with FDA QSR 21 CFR part 820 & part 11
- Canadian MDR (CMDR) SOR/98-282 (2015), consolidated

### Loading Equipment

The 316L loading carts are designed to roll from the transfer carriage onto the rails for easy handling of heavy loads. To ensure safety and ease-of-use the carriage is equipped with a lock to prevent sliding of the cart. Swivel wheels with wheel brakes maximize mobility in limited space.



 **Learn from our Experts**  
Join our blog [www.tuttnauer.com/blog](http://www.tuttnauer.com/blog)



## GS Economic Line

International Sales and Marketing  
E-mail: [info@tuttnauer.com](mailto:info@tuttnauer.com)  
[tuttnauer.com](http://tuttnauer.com)

Tuttnauer Europe b.v.  
Hoeksteen 11, 4815 PR  
P.O.B. 7191, 4800 GD Breda  
The Netherlands  
Tel: +31 (0) 765 423 510, Fax: +31 (0) 765 423 540  
E-mail: [info@tuttnauer.nl](mailto:info@tuttnauer.nl)

Tuttnauer USA Co.  
25 Power Drive,  
Hauppauge, NY 11788  
Tel: +800 624 5836, +631 737 4850 Fax: +631 737 0720  
E-mail: [info@tuttnauerusa.com](mailto:info@tuttnauerusa.com)

  
**Tuttnauer**  
Your Sterilization & Infection Control Partners

Distributed by: